



**RB 300-46 4P/**  
**1480 [rpm]**  
**1 Stage**

Curve N.  
**T-2266**

Max. diameter  
**459 [mm]**

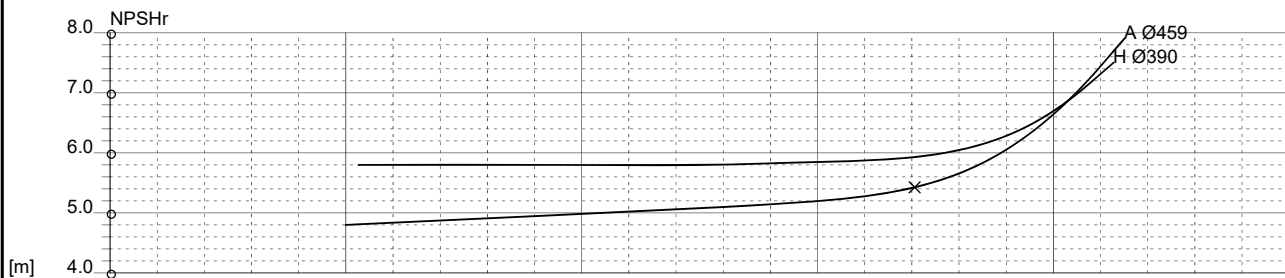
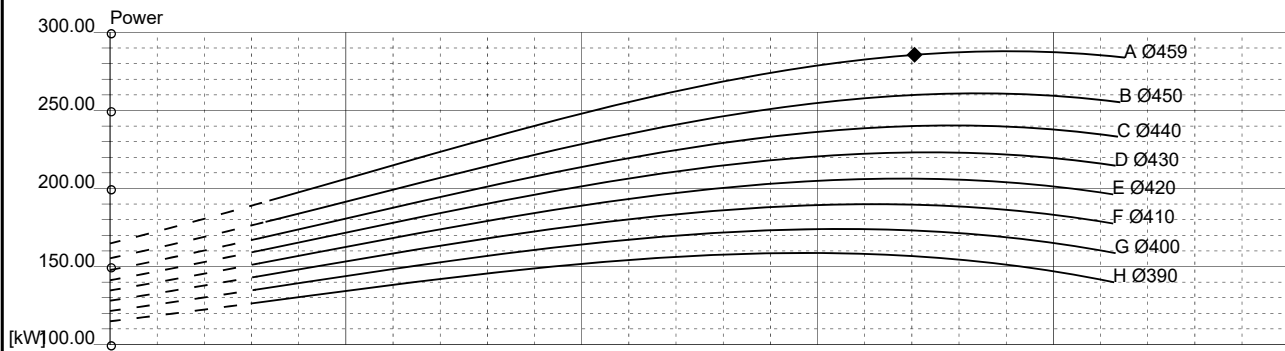
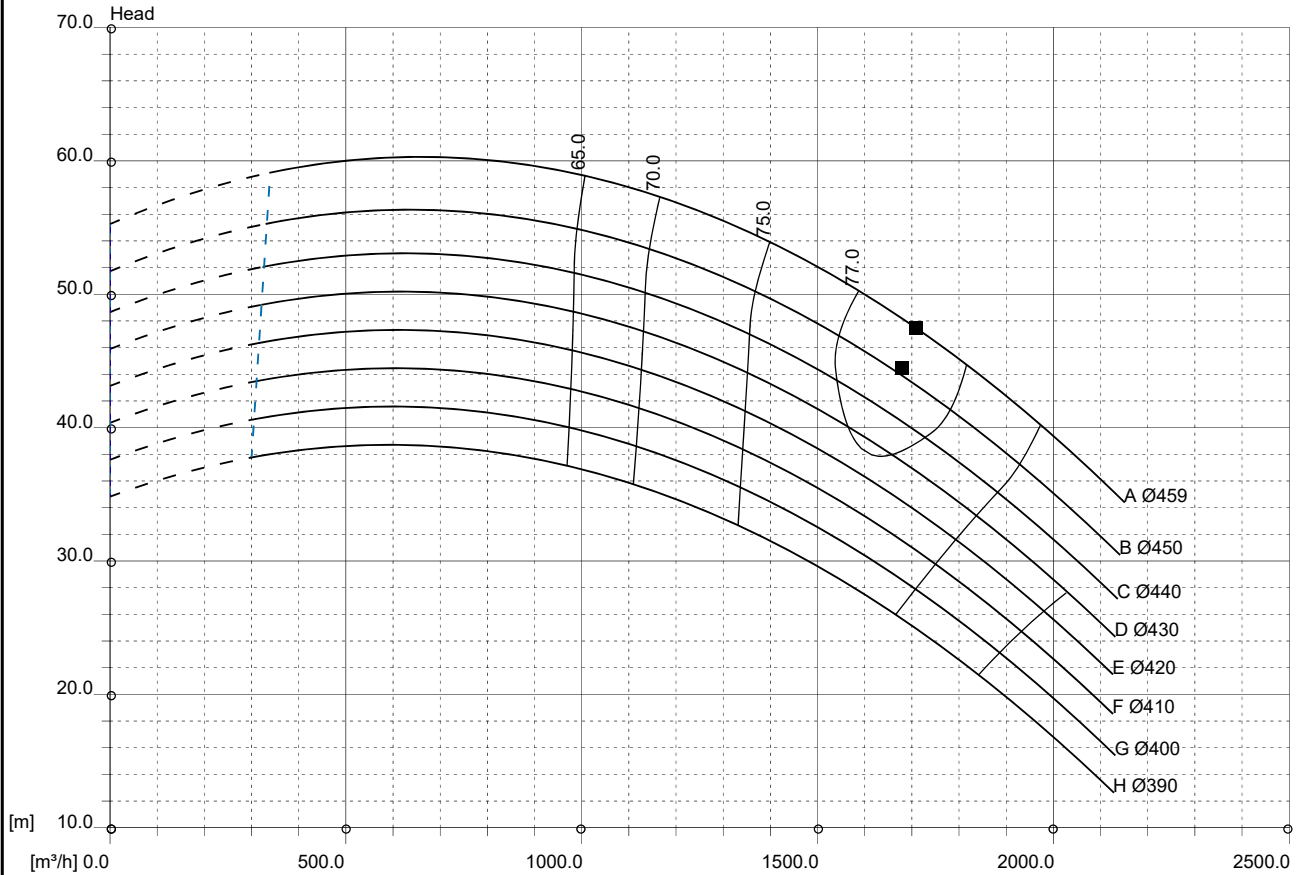
Min. diameter  
**390 [mm]**

Suction Ø  
**350 [mm]**

Discharge Ø  
**300 [mm]**

Density 1 and viscosity 1 cSt

Replace any previous edition



Comments

**For pumps working with liquids having specific gravity higher than 1.15 and viscosity higher than 200 cSt, please contact the Technical Dept.**

Diffuser	Impeller	NS <b>56</b>	SSS <b>286</b>	Author	Date <b>Apr 1, 2019</b>	Revision
----------	----------	-----------------	-------------------	--------	----------------------------	----------