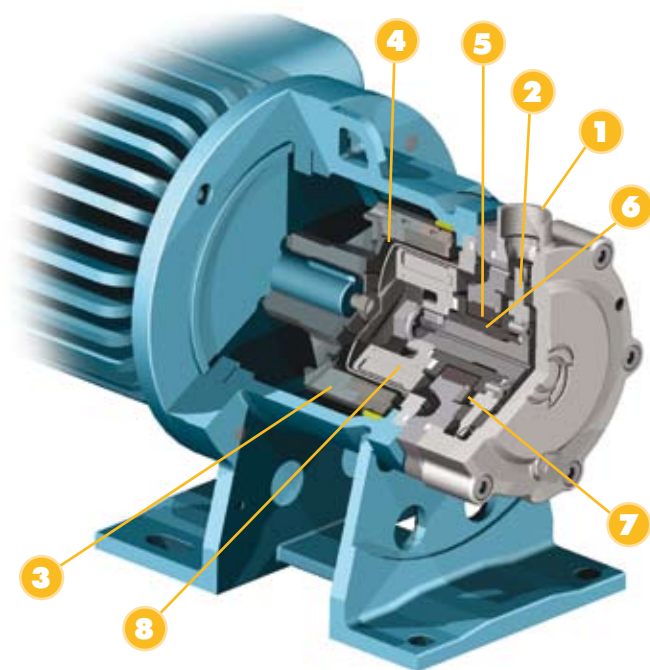




- Close-coupled single-stage pumps complying with the ATEX Directive, category II2G. Ideal for low-flow and high-head applications and pumping liquids containing up to 20% gas. Used to transfer clean corrosive, flammable and toxic liquids containing no solids.
- Exceptional mechanical strength provided by **AISI 316L** precision-cast components and standard **Hastelloy-C** isolation shell.
- Mechanical strength and magnetic drive designed to process high-pressure, -density and -temperature liquids (max. 140°C).
- Suitable for installation in confined spaces.
- Version with single fixed silicon-carbide or graphite support and inlet and outlet ports with DN 25 flange or 1" pipe thread.

- Hydraulic thrust control and optimised internal lubrication guarantee long life and low maintenance costs.
- Extensive interchangeability of components.

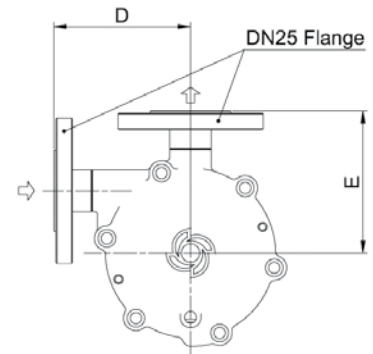
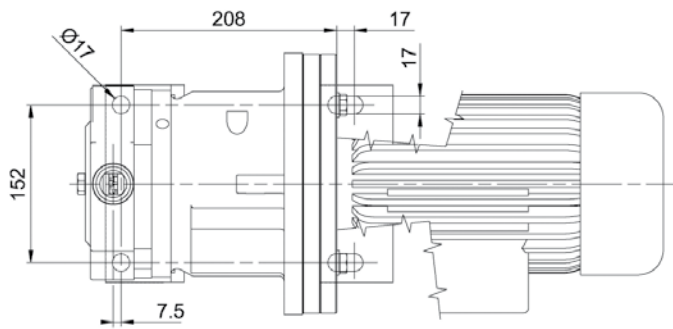
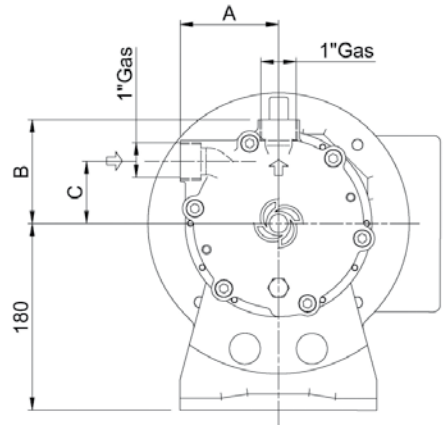
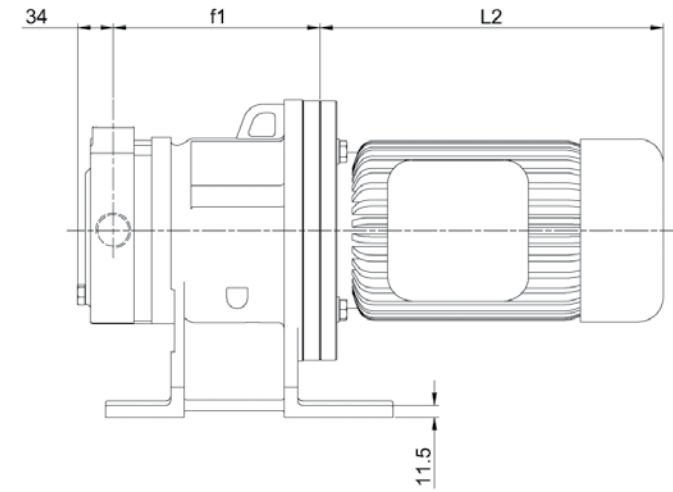


- | | |
|------------------------|------------------------|
| 1. Pump casing | 5. Static bushing |
| 2. Impeller unit | 6. Rotary bushing |
| 3. Outer magnetic core | 7. Thrust bearing |
| 4. Isolation shell | 8. Inner magnetic core |

Technical specifications

Materials	AISI 316L (standard) Hastelloy C (optional)
Flow rate	max 5 m ³ /h
Head	max 160 mcl
Electric motors	from 0.75 kW(gr.80) to 7,5 kW(gr.132)
Temperature range	from -30 °C to +140 °C
Allowable pressure rating	24 bar
Viscosity	max 200 cSt
Allowable solids	solids not permitted

Dimensions



HTS series

Tipo pompa Pump model	Grandezza motore - Frame Motor size - Frame					Ingombro motore Overall dimensions					
	A	B	C	D	E	f1	TEFC	L2	AOPE	L2	
HTS 80	90	90	50	125	125	Mot.80 - B5	183	Mot.80	233	Mot.80	290
						Mot.90 - B5	183	Mot.90	256	Mot.90	336
HTS 100	95	100	60	130	135	Mot.100 - B5	200	Mot.100	314	Mot.100	366
						Mot.112 - B5	200	Mot.112	323	Mot.112	415
HTS 130	95	100	60	130	135	Mot.132 - B5	218	Mot.132	400	Mot.132	503

Performance

